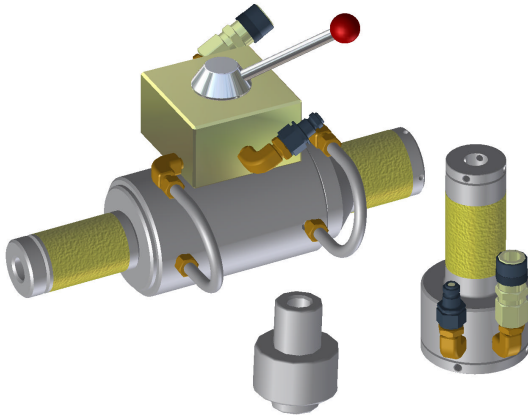


Technical Data Sheet



▼ TITON Flange Puller

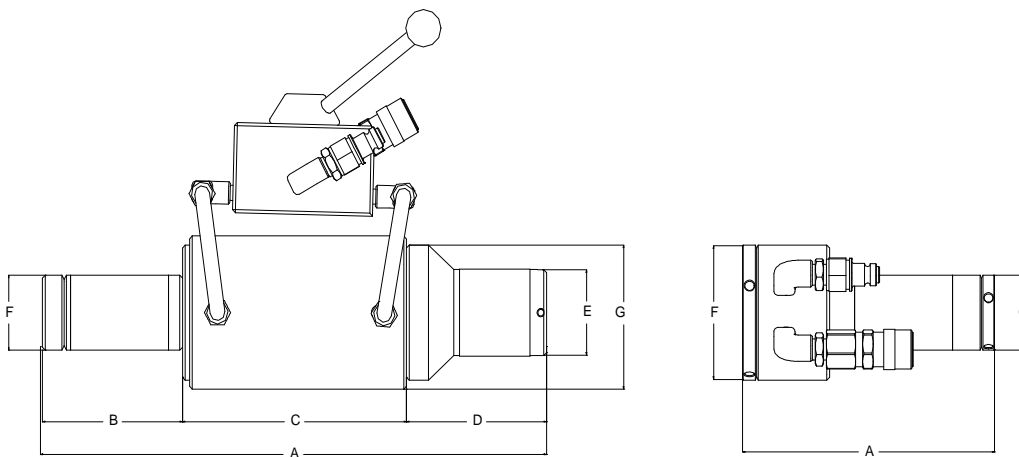


TITON
Flange Pulling System

Maximum Capacity Per Puller:
249Kn / 25 Ton

Maximum Operating Pressure:
700 Bar / 10,000 Psi

- For easy connection of flexible or rigid pipe spools or valve assemblies
- Lightweight and easily handled design
- Can be configured to use pullers singularly or in multiples
- Bar pulling system is available for applications with restricted access
- 18mm Dyeform wire eliminates “bird nesting” of the rope
- Hydraulically operated clamps allows rapid set-up and decommissioning



Max Load (Kn) (Ton)	Model	Wire Dia	MWP (PSI)	Stroke (in) (mm)	A (mm)	B (mm)	C (mm)	D (mm)	E (mm)	F (mm)	G (mm)	Weight (kg)		
248	25	Flange Puller	18mm	10,000	3	75	400	130	155	115	60	60	102	17
-----	-----	Reaction Clamp	18mm	10,000	-----	-----	185	-----	-----	-----	92	60	5	

TITON Manufacturing Ltd - Head Office
24b Oak Road
West Chirton North Ind. Est.
North Shields, Tyne & Wear
NE29 8SF
United Kingdom

Tel: + 44 (0) 191 257 6777
Fax: + 44 (0) 191 257 9526

Email: sales@titonmanufacturing.co.uk
Web: www.titonmanufacturing.co.uk