

# Technical Data Sheet



## ▼ TITON CT Subsea Bolt Tensioner



### TITON

Subsea Bolt Tensioning System

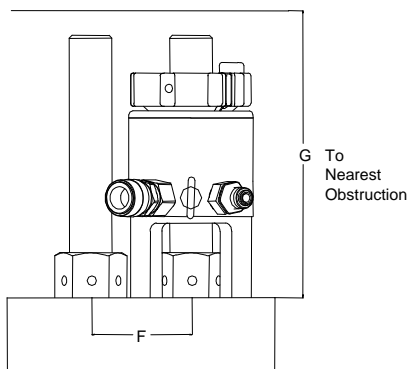
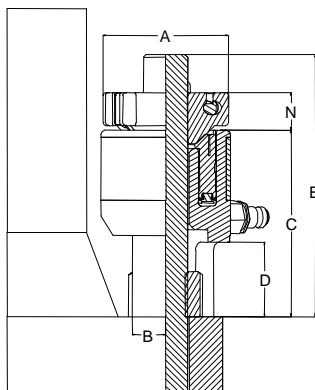
Flange Range:

**Compact Design Flanges**

Bolt Range:

**3/4" – 7/8" / M2 – M22**

- Suitable for Compact Flange Designs
- Lightweight and easily handled design
- Twin ports eliminate complicated "Tee Block" assemblies
- Solid or Quick Reaction Nuts are available for all standard Imperial or Metric thread forms
- Highly durable electro-less nickel plating reduces on-the-job maintenance
- Long 30mm stroke reduces diving time
- Built in over-stroke safety feature - if the stroke passes the indicator limit hydraulic oil is directed inwardly away from the operator



Bolt Size (Imperial) (Metric)	Model Number	M.W.P (PSI)	Max. Load (kN) (Tons)	H.P.A		Stroke		A	B	C	D	E	F	G	N	
				(mm)	(In)	(mm)	(In)	(mm)	(mm)	(mm)	(mm)	(mm)	(mm)	(mm)	(mm)	
3/4"	M20	21,750	139.99	14.05	934.00	1.45	20	0.787	66	15.5	97	35	127	43	209	25
7/8"	M22															

Note: dimension G includes allowance for full piston stroke at 30mm

TITON Manufacturing Ltd - Head Office  
24b Oak Road  
West Chirton North Ind. Est.  
North Shields, Tyne & Wear  
NE29 8SF  
United Kingdom

Tel: + 44 (0) 191 257 6777  
Fax: + 44 (0) 191 257 9526